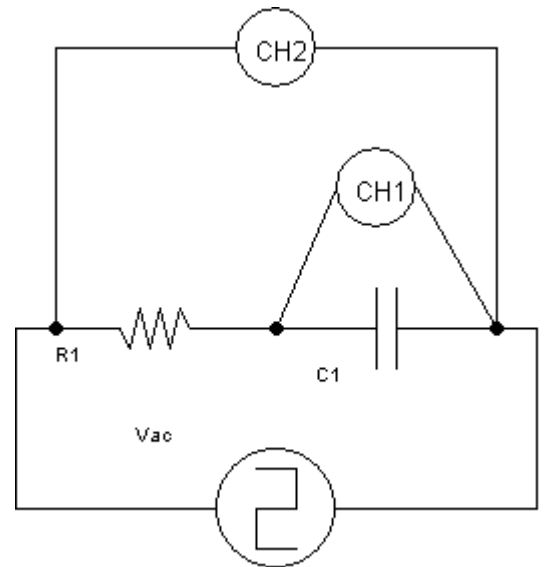
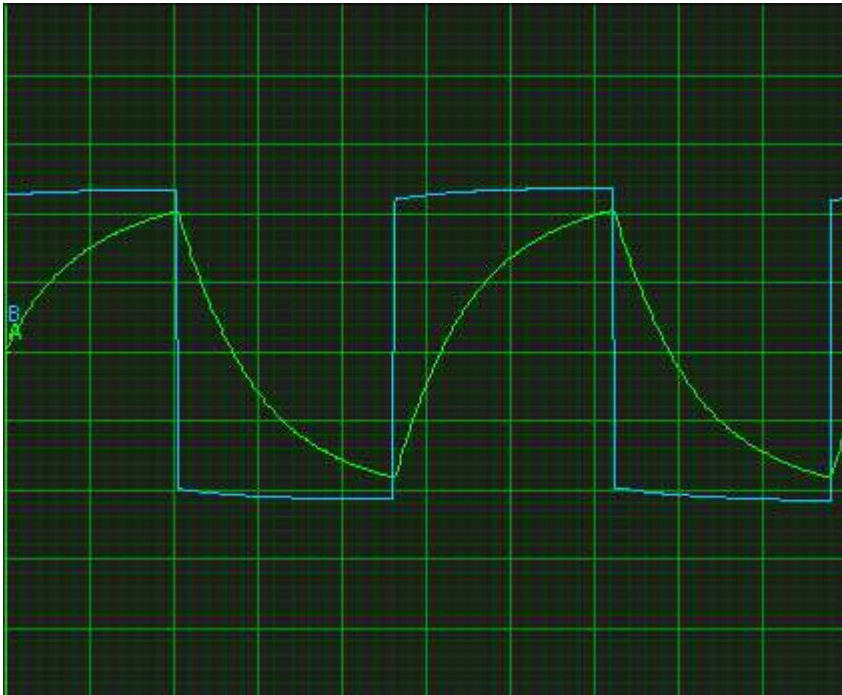


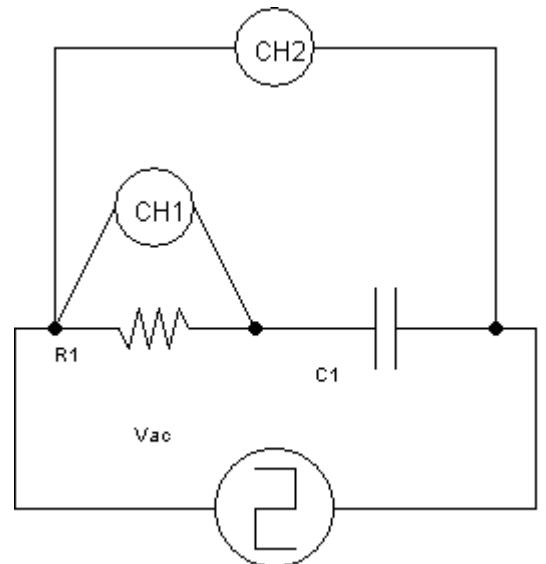
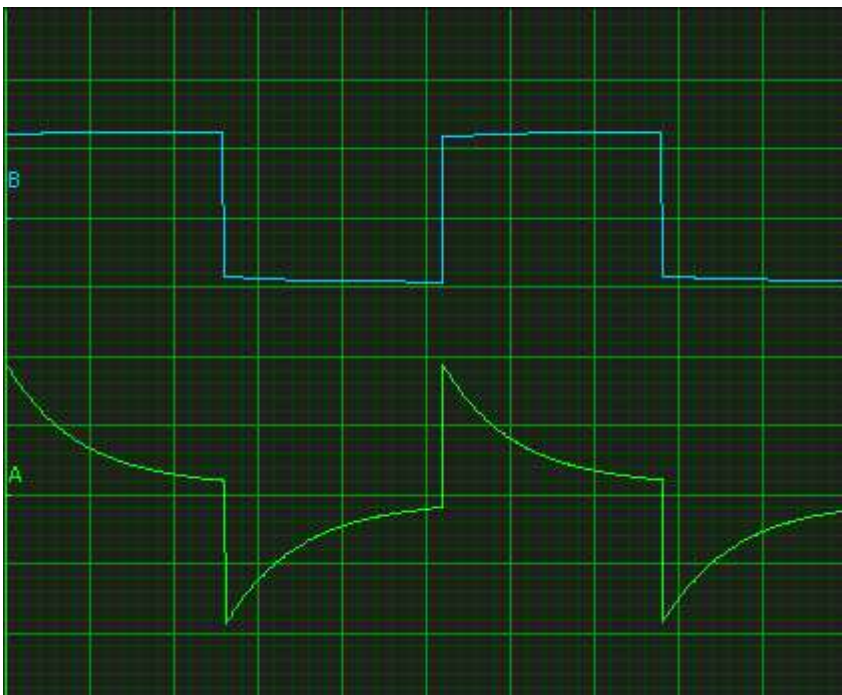




ELETTROTECNICA

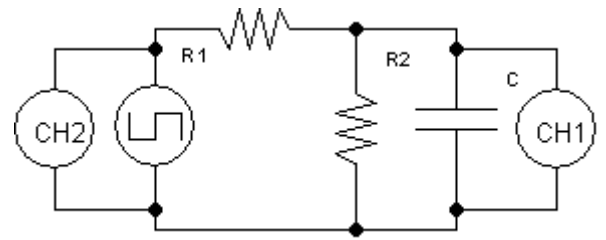
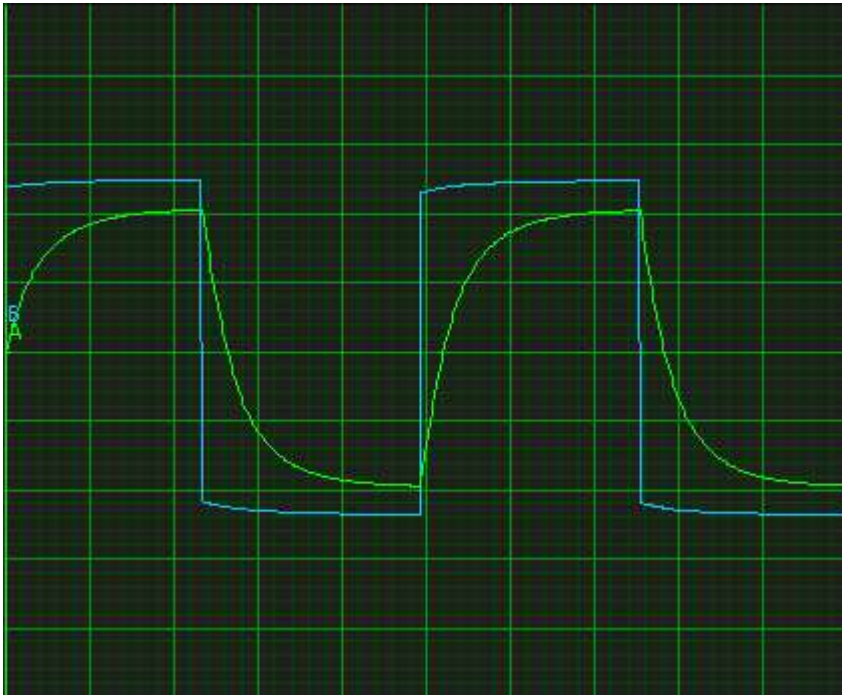
LABORATORIO 3



 CH1 = verde
 CH2 = azzurro

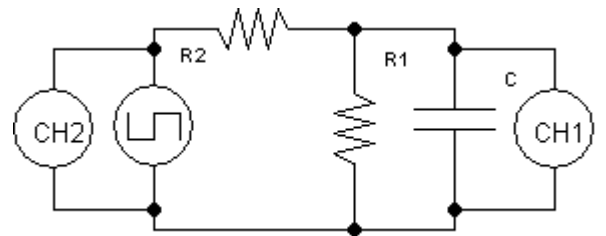
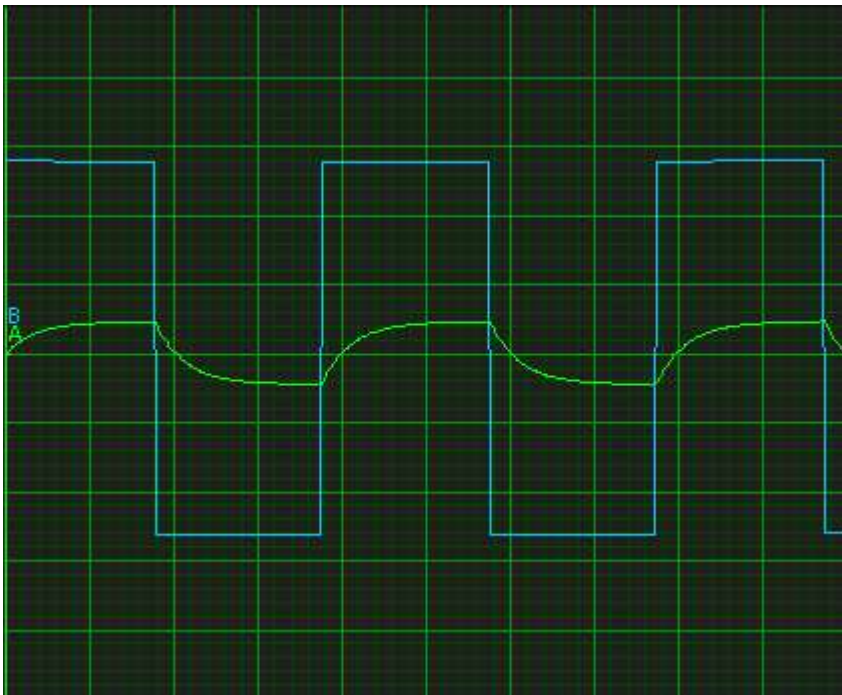


 CH1 = verde
 CH2 = azzurro



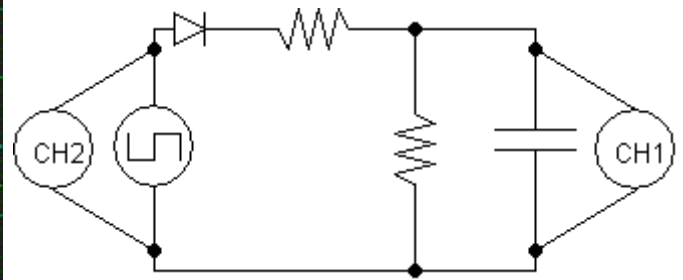
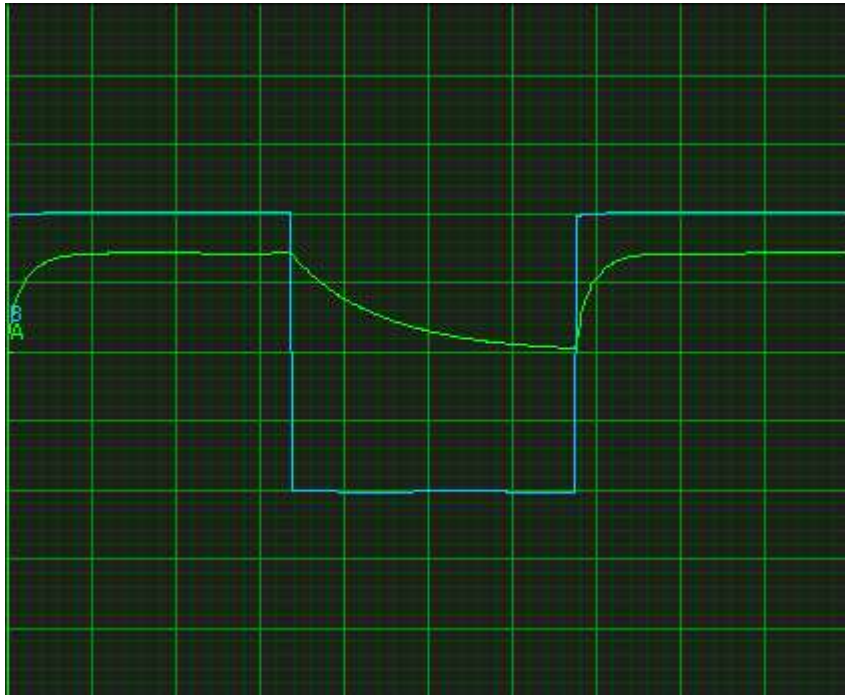
CH1 = verde
 CH2 = azzurro

$R1 = 996 \ \Omega$
 $R2 = 4870 \ \Omega$

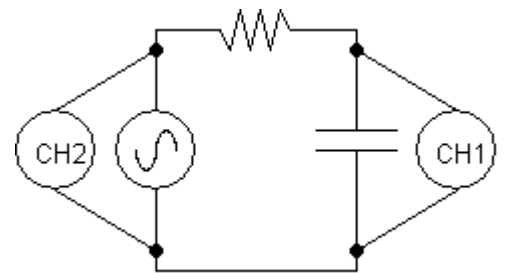
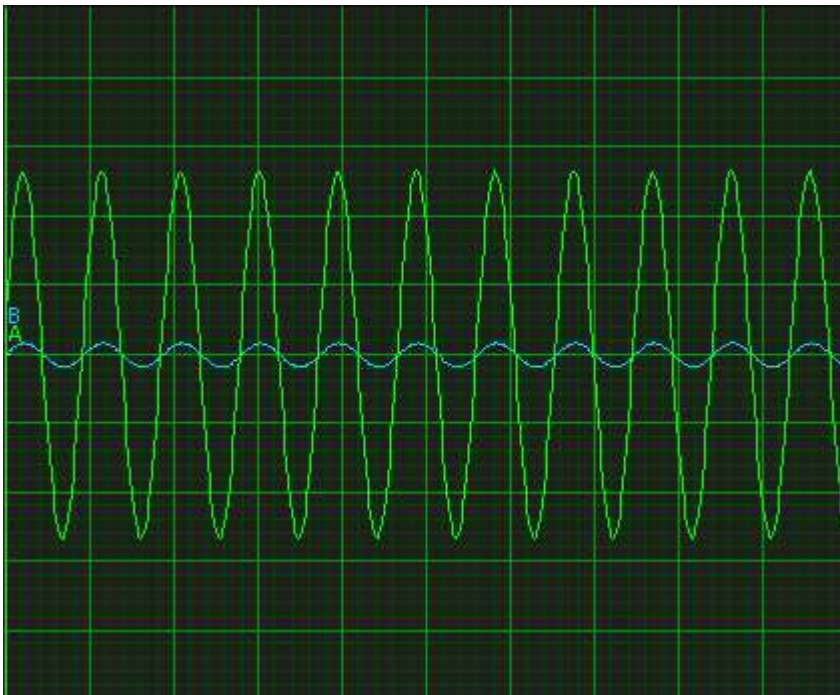


CH1 = verde
 CH2 = azzurro

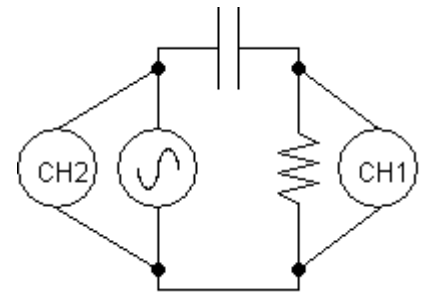
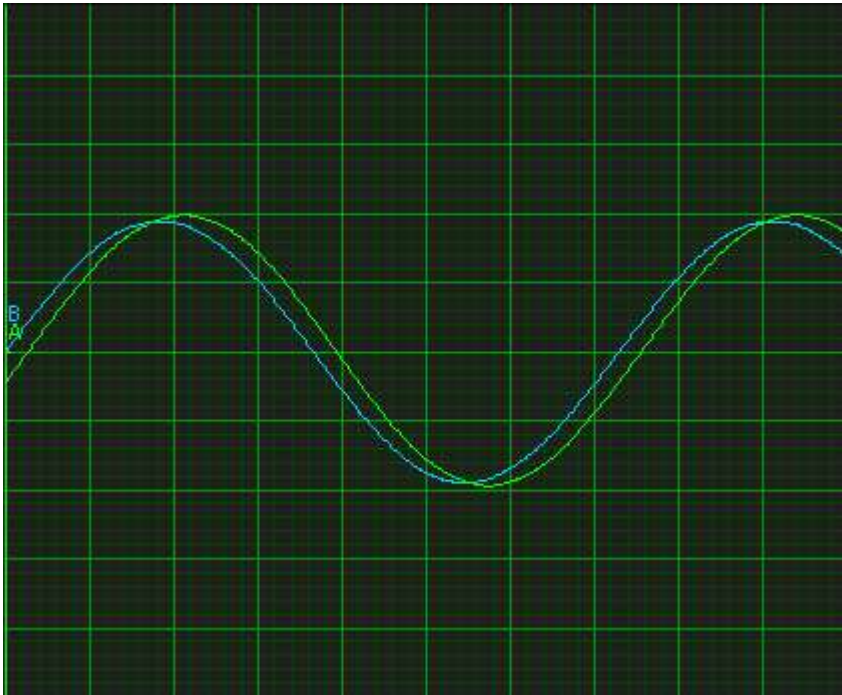
$R1 = 996 \ \Omega$
 $R2 = 4870 \ \Omega$



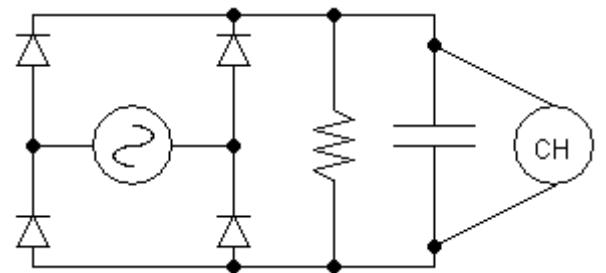
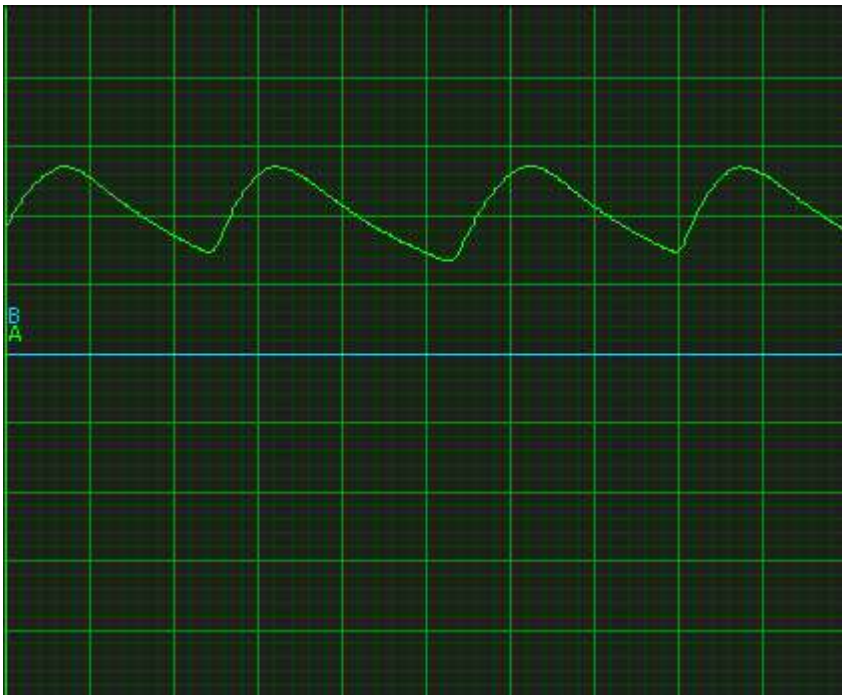
CH1 = verde
 CH2 = azzurro



CH1 = azzurro
 CH2 = verde



■ CH1 = azzurro
■ CH2 = verde



■ CH = verde